

***A report on the finds from archaeological excavations carried out by AOC Archaeology Ltd, on the site of the Brunton Wire Works Musselburgh***

**George R. Haggarty**

**Research Associate: National Museums Scotland**

The stoneware and kiln furniture recovered during the programs of work carried out by AOC Archaeology Ltd. and catalogued on this CD ROM, derives from wasters dumped by the Newbigging Pottery, Musselburgh, and dates from the period of production of the Newbigging Pottery, Musselburgh under the ownership of William Affleck Gray and his sons, 1868-9 to 1923. The historical excerpt below was taken from (Haggarty, 2005 Word File 2). A few shards of domestic pottery and ceramic material, probably in use at the factory canteen, could have originated from any one of several sources. Among the shards of Rockingham glazed ware was a bisque example which matches the pattern on a number of glazed shards (No 12 Word File 01). This implies that the Newbigging pottery was producing earthenware as well as stoneware during the Grays' tenure.

A moulded glass Worcestershire Sauce bottle by Holbrook & Co, from the excavation, (Word File 11) suggests a deposition date of no earlier than c.1890. A Leeds company called Bell and Brooke, later renamed Goodall Blackhouse, was established in 1837 and made a range of products, including what the company described as "Celebrated Yorkshire Relish"; this brand was to prove hugely successful. When Holbrook & Co **had** commenced production of a sauce and called it "Yorkshire Relish", in the 1890s Goodall Blackhouse took them to court. The House of Lords finally ruled that only Goodall Blackhouse was entitled to use the term "Yorkshire Relish". Two similar moulded bottles were recovered from the hospital ship *Kyarra*, sunk by a German submarine on the 26<sup>th</sup> May 1918.

## **THE GRAYS**

Although he did not as yet own the property, the Valuation Roll shows that by 1868 to 1869 William Affleck Gray, M.D. M.R.C.S.E., was established in the Newbigging Pottery, commencing production as *Midlothian Stone Ware Potteries, West Vennel, Newbigging*. In two separate acquisitions, one in 1870<sup>i</sup>, and another in 1875<sup>ii</sup>, he purchased *the White Potterie, Clay, and Flint Mills* at Portobello from heirs of the

Rathbone family. Gray then developed the joint Newbigging and Portobello Potteries into a major producer of Stoneware. His sons, William and Alexander, eventually took charge of both potteries, with William at Newbigging, and Alexander in Portobello; he conducted his medical practice from Newbigging Lodge, and later from Rathbone House, Portobello<sup>iii</sup>. On 9 May, 1889, he bought the entire Newbigging premises from The Third Provident Investment Property Company *with consent of and by James Turner*, acquiring:

*the Maltbarn, Kiln, Steepstone, Cornbarn, Steam Engine, Pump, Iron Tank and all other Machinery and Articles connected with the Work belonging to the Trustees and James Turner, with the Yard or Ground whereon said buildings are erected, and garden behind the Kiln, in the burgh of Musselburgh and Dambrae of the same, formerly a Pottery Ware Manufactory, and afterwards a Starch and Pithina Food Manufactory now reconverted into a Pottery, and that Mansion House with Offices, Court, Garden, and Park belonging thereto; also the small dwelling House adjoining to said Mansion House with exclusive use of the Pump Well in said Court.*

Wm. Affleck Gray exercised control of the Company in his lifetime, and it was only after his death, as noted in a sasine dated the 27 December 1899<sup>iv</sup>, that *The Trustees of the Deceased William Affleck Gray were empowered to sell or lease the Newbigging and Portobello Properties to his sons, Alexander Gray and William Gray, both of whom were Trustees, or to the survivor of them, if they so wished.* The same document lists properties owned by W.A. Gray & Sons, including:

*The whole White Potterie at Portobello originally under lease to Messrs. Rathbone & Yool with the enclosures behind to the North etc. with Workmen's Houses: Rathbone House Portobello and ground attached thereto: All and Haill the Clay and Flint Mill and Mill Yard situated near the said Potterie with the right and privilege of the Mill lead: All and whole that part and portion of the Lands of the Figgate as feud by the late William Jamieson of Portobello<sup>v</sup>*

In 1901, the firm of W.A. Gray & Sons was noted in the *Edinburgh and Leith Post Office Directory* as *Manufacturers of Stoneware Jars, Jam Pots, etc. Portobello and Musselburgh* and for the next 18 years little seems to have changed, for, in 1920 they

were categorised *Bottle and Jar Manufacturers*; they now had a telephone number, 159 Portobello. The 1922-23 issue of the Directory advises that one *William Richardson (W. A. Gray & Sons) 11, East Brighton Crescent, Portobello, tel. 159 Portobello*, was part of their organisation.

The brothers, William and Alexander Gray, had been running the business for at least forty years, and the time had come to realise their assets. Accordingly, in 1923<sup>vi</sup>, the Gray Trustees made the decision to sell Newbigging Lodge, complete with offices, garden, and field, to William Richardson, *Stoneware Manufacturer*, who bought the property for the sum of £920 Sterling; the Trustees retained ownership of the pottery premises, renting them to Richardson. This is confirmed by the 1925-26 Valuation Roll, which recorded him as tenant of the *Garden, Pottery and Engine Power Store and Pottery, operating as W.A. Gray & Sons, Earthenware Manufacture (William Richardson Sole Partner)*. This implies that Richardson now controlled, or owned, the Company.

The Lawyers acting for the Gray Trustees had approached The Provost and Council of Musselburgh in October 1923<sup>vii</sup> offering them the opportunity to buy Newbigging Lodge on behalf of the Town. Inevitably, the Council appointed a Committee to deal with the matter, but prevaricating too long, missed out on the sale. A month after his initial purchase William Richardson sold the Newbigging property to the Provost and Council for an agreed figure of £1,000, at the same time negotiating favourable terms for his tenancy of the house. The transaction was confirmed in the Register of Sasines on 12 December 1923<sup>viii</sup>.

## Bibliography

Haggarty, G 2005 'Newbigging Pottery Musselburgh, Scotland: Ceramic Resource Disk' *The Northern Ceramic Society Journal* 2, Word File 2 Archaeology, History & Bibliography (2004-5).

NAS: National Archives of Scotland.

---

<sup>i</sup> NAS RS108/93/162

<sup>ii</sup> NAS RS108/572/31

<sup>iii</sup> Edinburgh & Leith Post Office Directories

---

<sup>iv</sup> NAS RS27/2148/195

<sup>v</sup> NAS RS108/3709/135

<sup>vi</sup> NAS RS/108/6743/119

<sup>vii</sup> NAS B52/20

<sup>viii</sup> NAS RS108/6747/56

## Acknowledgments

I am grateful to the AOC Archaeology Group for allowing me to catalogue the finds from the Brunton Wire Works Musselburgh and for the support I received from Cira Clark and Martin Cook. While working on the assemblage, Sheila Forbes and Jim Gray my colleagues, friends, and National Museums Scotland volunteers, carried out, with help from Sausan Cameron the tasks of sorting, shard marking, and packing. For long term support of my work on Scottish pottery I am indebted to a number of staff in the National Museums, but especially George Dalglish and David Caldwell.

**George Raymond Haggarty\*** asserts and gives notice of his right under section 77 of the Copyright, Designs and Patent Act 1988 to be identified as the Author of this ceramic resource disk.

At present, the ceramic material catalogued on this CD Rom is housed at the head offices of the AOC Archaeology Group, but it will be transferred to **East Lothian Council Museums Service\*\*** who assert and gives notice of their right under the Copyright, Designs and Patent Act 1988 to be identified as copyright holders of the photographs used to illustrate the excavated shards contained in the Morrison's Haven Resource Disk.

\*8 John Street Portobello Edinburgh Scotland EH15 2EE: e-mail [haggartyg@aol.com](mailto:haggartyg@aol.com)

\*\*East Lothian Council Museums Service: Museums HQ, Dunbar Road, Haddington East Lothian, EH41 3PJ: Tel – 01368 861954



# AOC Excavations: Brunton Wire Works: Musselburgh

## Domestic Pottery Various

(Box No 1)

(No 1)- (Project 20462) - (Context 005)

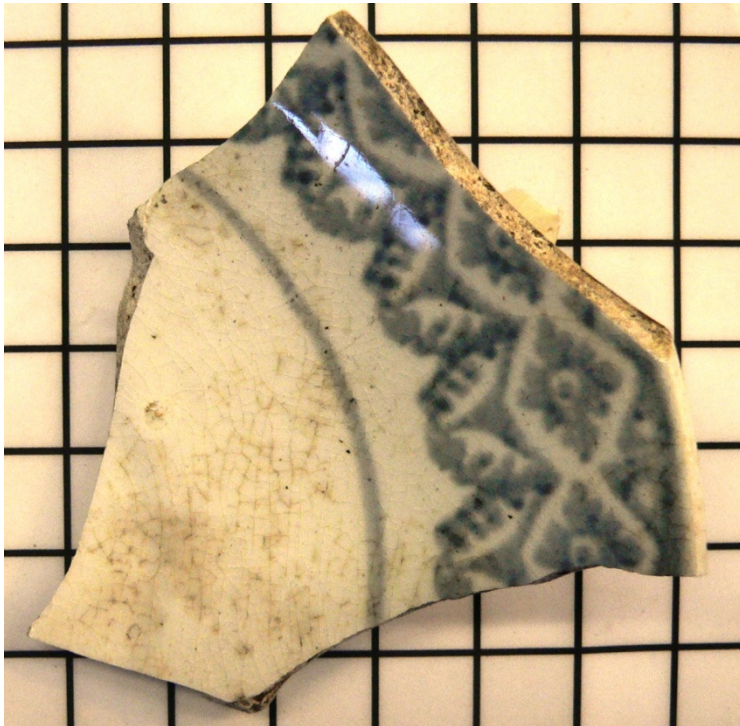
Finds No	Form	Fabric	Glazed	Dia	H	Decoration	Illus.
015	Saucer	W/Earthenware	Yes			Sponge Printed	001



Two adjoining rim shards from a white earthenware saucer with cut sponge decoration, and banded in red: same pattern as (No 2) below

(No 2) - (Project 20462) - (Context 005)

Finds No	Form	Fabric	Glazed	Dia	H	Decoration	Illus.
015	Saucer	W/Earthenware	Yes			Sponge Printed	002



One rim shard from a white earthenware saucer with cut sponge decoration and banded in grey: same pattern as (No 1) above

**(No 3) - (Project 20462) - (Context 005)**

Finds No	Form	Fabric	Glazed	Dia	H	Decoration	Illus.
015	Bowl	W/Earthenware	Yes			Sponge Printed	003



Two conjoining rim shard from a white earthenware hemispherical bowl decorated with cut sponge printing and banding in violet.

**(No 4) - (Project 20462) - (Context 005)**

Finds No	Form	Fabric	Glazed	Dia	H	Decoration	Illus.
015	Bowl	W/Earthenware	Yes			Sponge Printed	004



One thick body shard from a white earthenware bowl decorated with cut sponge printing and banding in grey, blue red



**(No 5) - (Project 20462) - (Context 005)**

Finds No	Form	Fabric	Glazed	Dia	H	Decoration	Illus.
015	Bowl	W/Earthenware	Yes			Hand Painting	005



One body shard from a white earthenware bowl with a slight carinated body and traces of hand painted green foliage

**(No 6) - (Project 20462) - (Context 005)**

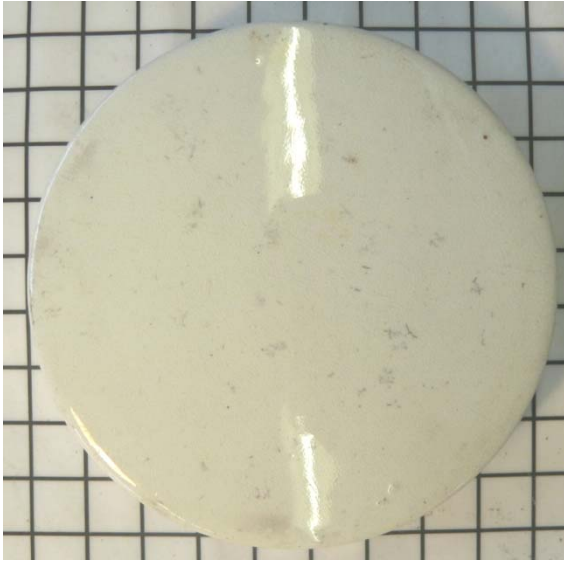
Finds No	Form	Fabric	Glazed	Dia Base	H	Decoration	Illus.
015	Cup	W/Earthenware	Yes	65mm	75mm	No	006



Two conjoining body shards from a plain V shaped white earthenware cup

**(N0 7) - (Project 20462) - (TR 2 ?)**

Finds No	Form	Fabric	Glazed	Dia	H	Decoration	Illus.
008	Cover	W/Earthenware	Yes	85mm	17mm	No	007



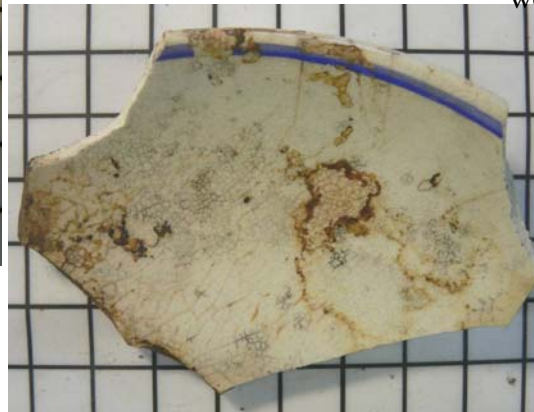
One cover from a white earthenware paste jar

**(No 8) - Project 20462) - (TR 2?)**

Finds No	Form	Fabric	Glazed	Dia	H	Decoration	Illus.
008	Saucers	W/Earthenware	Yes			Transfer Print	008



Two shards from a saucer or saucers both decorated with a simple over-glaze blue painted band. One of the shards also has part of a blue ribbon transfer print bearing the name Bruntons, which suggests that these saucers almost certainly come from the canteen of Bruntons wire works.



**(No 9) - (Project 20462) - (TR 2 ?)**

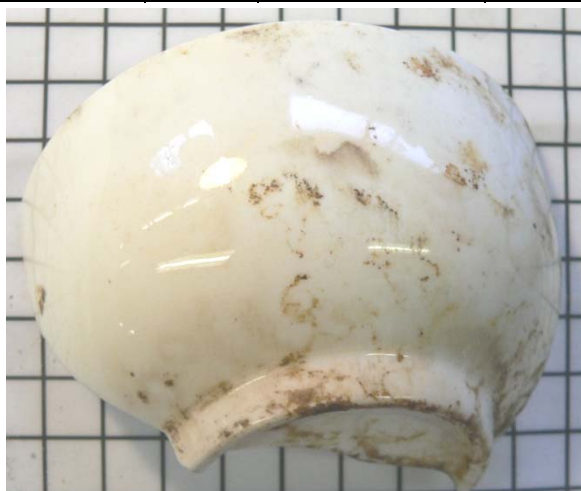
Finds No	Form	Fabric	Glazed	Dia	H	Decoration	Illus.
008	Plate	W/Earthenware	Yes			Banding	009



One rim shard from a plate decorated with a simple overglaze blue painted band in the style of the Bruntons saucers above.

**(No 10) - (Project 20462) - (TR 4)**

Finds No	Form	Fabric	Glazed	Dia	H	Decoration	Illus.
013	Bowl	W/Earthenware	Yes	50mm	48mm	No	010



One body shard from a small white earthenware bowl

**(No 11) - (Project 20462) - (Context TR 4)**

Finds No	Form	Fabric	Glazed	Dia	H	Decoration	Illus.
013	Bowl	W/Earthenware	Yes	72mm		No	011

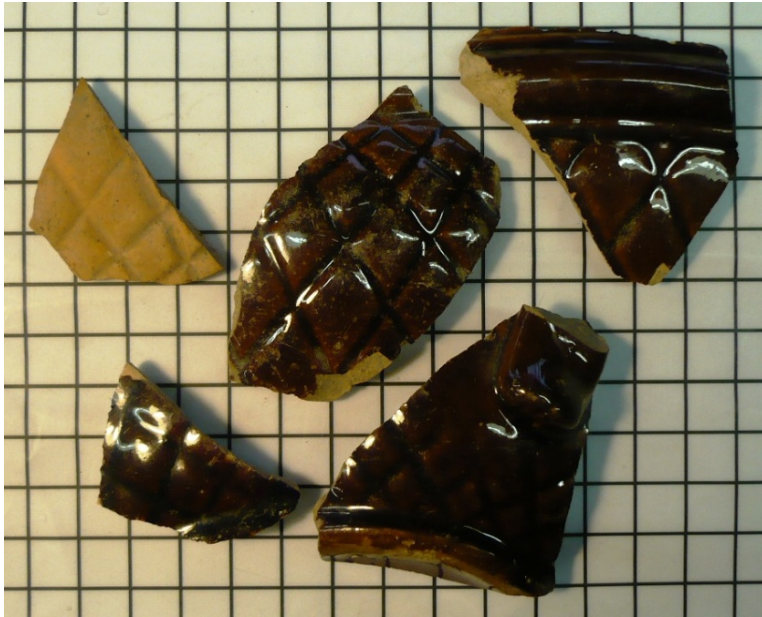


One body shard from a white earthenware bowl with a developed footrim



## (No 12) - (Project 20462) - (Context ?)

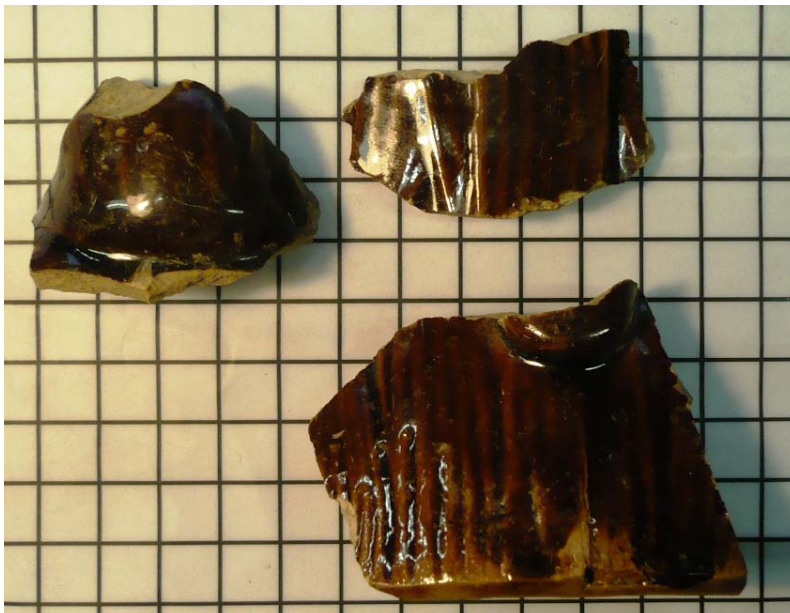
Finds No	Form	Fabric	Glazed	Dia	H	Decoration	Illus.
016	Teapot	Buff	Yes			Rockingham Glazed	012



Five shards four glazed and one bisque all from thick Rockingham glazed teapots in a moulded quilted pattern. The bisque shard might suggest that this was a Newbigging product and that as well as producing Stoneware Gray was producing Rockingham glaze ware during his tenure.

## (No 13) - (Project 20462) - (Context ?)

Finds No	Form	Fabric	Glazed	Dia	H	Decoration	Illus.
016	Teapot	Buff	Yes			Rockingham Glazed	013



Three shards one body, one spout and one basal angle from a thick Rockingham glazed teapot moulded with what looks like a rustic pattern of vertical wooden staves or thick grasses.

**(No 14) - (Project 20462) - (Context ?)**

<b>Finds No</b>	<b>Form</b>	<b>Fabric</b>	<b>Glazed</b>	<b>Dia</b>	<b>H</b>	<b>Decoration</b>	<b>Illus</b>
<b>016</b>	<b>Teapots</b>	<b>Buff</b>	<b>Yes</b>			<b>Rockingham Glaze</b>	<b>015</b>



Fifteen Rockingham glazed body, bases and handle shards from a number of plain teapots both moulded and thrown.

**(No 15) - (Project 20462) - (Trench 4)**

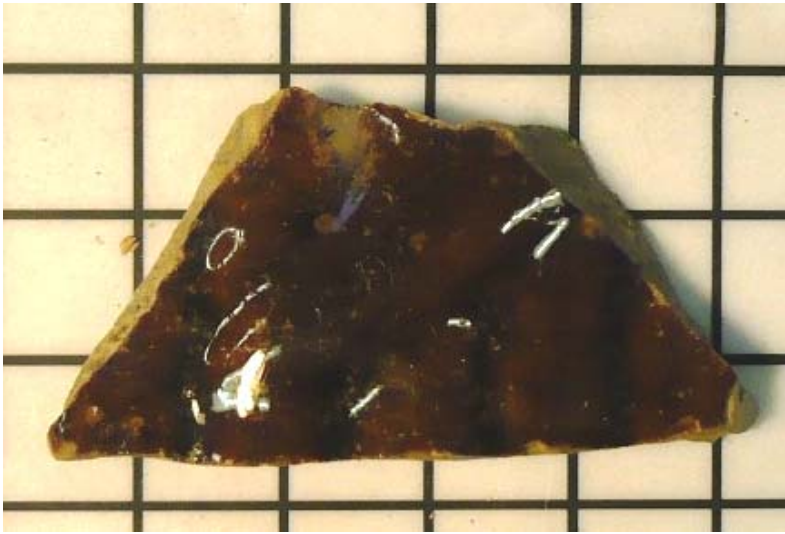
<b>Finds No</b>	<b>Form</b>	<b>Fabric</b>	<b>Glazed</b>	<b>Dia</b>	<b>H</b>	<b>Decoration</b>	<b>Illus</b>
<b>012</b>	<b>Teapot</b>	<b>Buff</b>	<b>Y</b>			<b>Rockingham Glazed</b>	<b>016</b>



One moulded Rockingham glazed spout from a teapot. This is similar to examples excavated at the Belfield pottery at Prestonpans: The Duchess Pattern

**(No 16) - (Project 20462) - (Trench 04)**

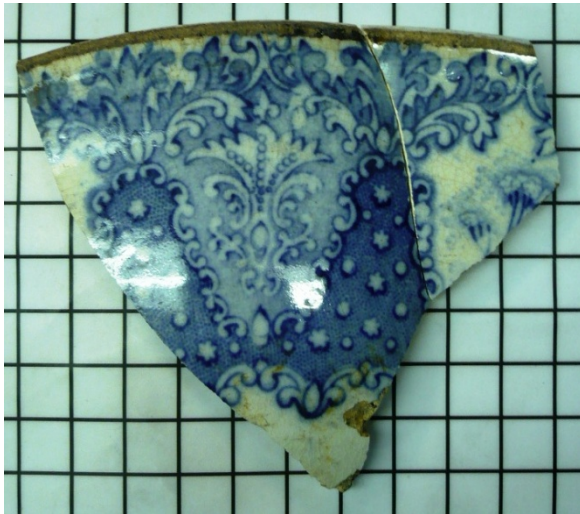
Finds No	Form	Fabric	Glazed	Dia	H	Decoration	Illus
012	Teapot	Buff	Y			Rockingham Glazed	017



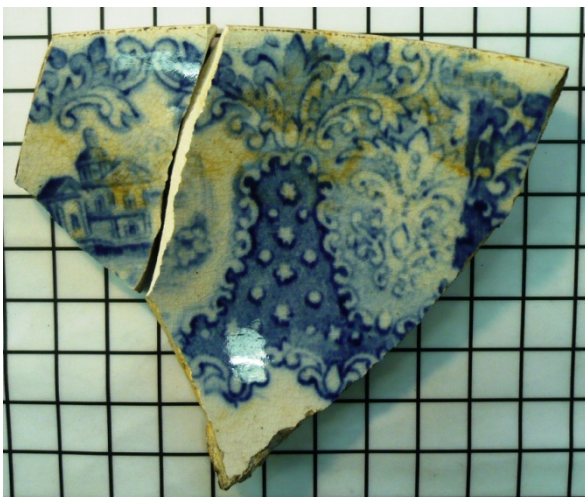
One small Rockingham glazed shard moulded with what looks like a fragment of the Bamboo design produced by the Bellfield pottery in Prestonpans.

**(No 17) - (Project 20462) - (Context ?)**

Finds No	Form	Fabric	Glazed	Dia	H	Decoration	Illus
016	Bowl	W/ Earthenware	Y			Transfer-Printed	014



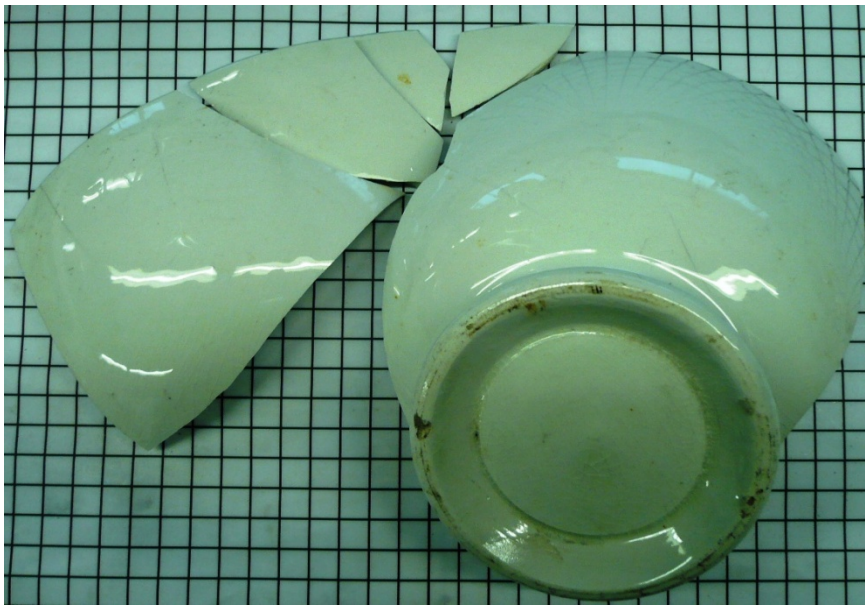
Two conjoining shards from a thick bowl decorated below the rim on both surfaces with blue & white transfer prints.





**(No 18) - (Project 20462) - (TR 2)**

Finds No	Form	Fabric	Glazed	Dia	H	Decoration	Illus
014	Bowl	W/Earthenware				None	018



Five shards which conjoin to form a large fragment, of a white earthenware bowl which has a developed footrim.

**(No 19) - (Project 20462) - (Context TR 2)**

Finds No	Form	Fabric	Glazed	Dia	H	Decoration	Illus
014	Ashet	W/Earthenware	Y			Transfer-printed	019



One shard from a very thick ashet decorated with a green border transfer print of an entwined rope and vases

## AOC Excavations: Brunton Wire Works: Musselburgh

### White Stoneware Jars Printed

(Box No 1)

(No 20) - (Project 20462) - (Context?)

Finds No	Form	Fabric	Glazed	Dia	H	Decoration	Illus
103	Jars	White Stoneware	Yes	105mm	121mm	Transfer Printed	020

Nine shards, with two conjoining, from seven white stoneware marmalade pots printed in black with

**Prepared under Patent from /  
H.M. ALFONSO XII. KING OF SPAIN /  
JOHN MOIR & SON. Ltd /  
ORANGE MARMALADE /  
LONDON. ABERDEEN /  
and SEVILLE /**

**Awarded THIRTY ONE GOLD MEDALS /  
London, Paris, Vienna, Calcutta, New Orleans & Antwerp**



(No 21) - (Project 20462) - (Context?)

Finds No	Form	Fabric	Glazed	Dia	H	Decoration	Illus
103	Jars	White Stoneware	Yes	85mm	91mm	Transfer Printed	021

Fourteen shards with three conjoining, from 8 to 10 white stoneware marmalade pots moulded on the bases with **Gray & Sons Patent 1 lb Portobello**, and printed in black with

**HOLBURN / CITY / KENSINGTON /**

**PURE SEVILLE ORANGE /**

**MARMALADE /**

**FROM /**

**BARHAM & MARRIAGE /**

**FAMILY GROCER /**

**LONDON /**





(No 22) - (Project 20462) - (Context?)

Finds No	Form	Fabric	Glazed	Dia	H	Decoration	Illus
103	Jar	White Stoneware	Yes			Transfer Printed	022

One white stoneware jar printed in black with a trade mark for what looks like

**WILLIAM WHITELAW /**

**UNIVERSIAL PROVIDER /**

**WESTBOURN DRIVE /**

**LONDON /**

**BAYSWATER, LONDON /**

**GROWN AND PRESERVED ON MY /**

**OWN FRUIT PLANTATION /**

**?ANWORTH, MIDDLESEX / (possibly WANWORTH)**



## AOC Excavations: Brunton Wire Works: Musselburgh

### Once Fired White Stoneware Jars

(Box No 2)

(No 24) - (Project 20462) - (TR 04)

Finds No	Form	Fabric	Glazed	Dia	H	Decoration	Illus.
014	Jars	White Stoneware	Y	58mm	65mm	None	24



Four small complete plain moulded jars with string cut below their lips:  
 Impressed on all their base is **GRAY / AVERAGE / 4 OZ / PATENT**.  
 Fragments of nine others discarded from this context, four others from (TR 15 Finds No 001) and one from (TR 02 Finds No 014)

## (No 25) - (Project 20462) - (TR 04)

Finds No	Form	Fabric	Glazed	Dia	H	Decoration	Illus.
012	Jars	White Stoneware	Y	68mm	78mm	None	25



Four complete profiles of plain moulded jars with string cuts below their lips (three illustrated): Impressed on all their base is **GRAY / AVARAGE / 8 OZ / PATENT.** Shards from three other examples discarded from (TR 15 Finds No 001) and four from (Context? Finds No 104)

## (No 26) - (Project 20462) - (TR 04)

Finds No	Form	Fabric	Glazed	Dia	H	Decoration	Illus.
010	Jar	White Stoneware	Y	83mm		None	26



Two base shard from plain moulded jars (one illustrated): Impressed on all their base is **GRAY & SONS / PATENT / 1. I b / PORTOBELLO**



## (No 27) - (Project 20462) - (TR 04)

Finds No	Form	Fabric	Glazed	Dia	H	Decoration	Illus.
010	Jar	White Stoneware	Y	97mm		None	27



One base shard from a plain moulded jar: Impressed on all their base is **GRAY & SONS / PATENT / 2. I b / PORTOBELLO**

## (No 28) - (Project 20462) - (TR 06)

Finds No	Form	Fabric	Glazed	Dia	H	Decoration	Illus.
006	Jar	White Stoneware	Y	75mm		None	28 a & b



One base shard from a jar moulded with vertical ribs: Impressed on all their base is **PORTOBELLO N B**: The N B stands for north Britain

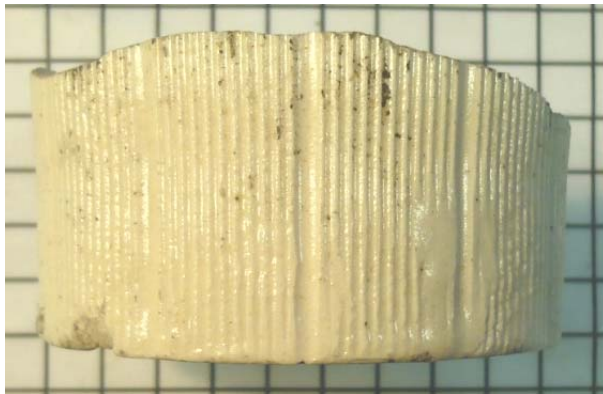


(No 29) - (Project 20462) - (TR 2)

Finds No	Form	Fabric	Glazed	Dia	H	Decoration	Illus.
008	Jar	White Stoneware	Y	79mm		None	29 a & b



Three base shard from jars moulded with vertical ribs (one illustrated): Impressed on all their base is **GRAY & SONS / PATENT / 1. I b / PORTOBELLO**





**(No 30) - (Project 20462) - (TR 2)**

Finds No	Form	Fabric	Glazed	Dia	H	Decoration	Illus.
014	Jars	White Stoneware	Y	85mm	90-95mm	None	30



Three complete plain white stoneware jars with string cut below rim: they are unmarked and vary in height: shards of this type have been discarded from almost all contexts especially (TR 15 Finds No 001) which had twenty four shards from at least fourteen jars.

**(No 31) - (Project 20462) - (TR 4)**

Finds No	Form	Fabric	Glazed	Dia	H	Decoration	Illus.
012	Jar	White Stoneware	Y	96mm	137mm	None	31



One almost complete white stoneware jar with string cut below rim: unmarked:

**(No 31) - (Project 20462) - (TR 4)**

<b>Finds No</b>	<b>Form</b>	<b>Fabric</b>	<b>Glazed</b>	<b>Dia</b>	<b>H</b>	<b>Decoration</b>	<b>Illus.</b>
<b>012</b>	<b>Jar</b>	<b>White Stoneware</b>	<b>Y</b>	<b>94mm</b>	<b>95mm</b>	<b>None</b>	<b>31</b>



One complete white stoneware jar  
with string cut below rim: unmarked:

## AOC Excavations: Brunton Wire Works: Musselburgh

### Jars

(Box No 03)

(No 36) - (Project 20462) - (TR 004)

Finds No	Form	Fabric	Glazed	Dia	H	Decoration	Illus.
009	Jars	Stoneware	Y	92-3mm	138-143mm	None	36



Two complete stoneware jam jars in an off white/tan colour. Eight shards from at least 5 jars; other examples discarded

(No 37) - (Project 20462) - (TR 020)

Finds No	Form	Fabric	Glazed	Dia	H	Decoration	Illus.
007	Jar	Stoneware	Y	94mm	137mm	None	37



Six conjoining shards forming a large fragment of a jam jar in a tan colour. Two shards from another example discarded.



**(No 38) - (Project 20462) - (TR 002)**

Finds No	Form	Fabric	Glazed	Dia	H	Decoration	Illus.
014	Jar	Stoneware	Y	93mm	136mm	None	38



One complete stoneware jam jar in an off white colour. Ten shards from at least 4 other examples discarded.

**(No 39) - (Project 20462) - (TR ?)**

Finds No	Form	Fabric	Glazed	Dia	H	Decoration	Illus.
102	Jars	Stoneware	Y	93mm	136mm	None	39



Five shards from the tops of four shouldered, two tone, stoneware jars: eighteen plain small shards discarded..

**(No 40) - (Project 20462) - (TR 020)**

<b>Finds No</b>	<b>Form</b>	<b>Fabric</b>	<b>Glazed</b>	<b>Dia</b>	<b>H</b>	<b>Decoration</b>	<b>Illus.</b>
<b>004</b>	<b>Jars</b>	<b>Stoneware</b>	<b>Y</b>		<b>137mm</b>	<b>None</b>	<b>40</b>



Three shards from three straight sided stoneware jars: seven small shards discarded.

## AOC Excavations: Brunton Wire Works: Musselburgh

### Bottles

(Box No 04)

A large number of shards, or near complete examples, of these plain bottles was discarded

19 from TR 2 Finds No 014:

11 from TR 4 Finds No 010:

23 from TR 4 Finds No 011

34 from TR 6 Finds No 006

84 from TR 20 Finds No 002:

22 from TR 20 Finds No 004:

85 from TR 20 Finds No 007:

(No 42) - (Project 20462) - (TR ?)

Finds No	Form	Fabric	Glazed	Dia	H	Decoration	Illus
101	Bottles	Stoneware	Y	74-5mm	205-9mm	None	42



Shards, and complete examples, from thirteen plain stoneware bottles all with sloping shoulders: Only four examples kept, only one of which is impressed with the maker's mark, **Gray Portobello**, all others discarded.



**(No 43) - (Project 20462) - (TR ?)**

Finds No	Form	Fabric	Glazed	Dia	H	Decoration	Illus
101	Bottles	Stoneware	Y	74-5mm	205-9mm	None	43



Eleven shards, and complete examples, from a number of plain stoneware bottles; four almost complete were kept and illustrated: the rest discarded.

**(No 44) - (Project 20462) - (TR 002)**

Finds No	Form	Fabric	Glazed	Dia	H	Decoration	Illus
014	Bottle	Stoneware	Y	86mm	250mm	None	44



One complete example of a large plain stoneware bottle; seven shards from similar bottles were discarded.

**AOC Excavations: Brunton Wire Works: Musselburgh****Covers****(Box No 03)****(No 41) - (Project 20462) - (TR 004)**

<b>Finds No</b>	<b>Form</b>	<b>Fabric</b>	<b>Glazed</b>	<b>Dia</b>	<b>H</b>	<b>Decoration</b>	<b>Illus</b>
<b>012</b>	<b>Covers</b>	<b>Stoneware</b>	<b>Y</b>	<b>107mm</b>	<b>17 &amp; 18mm</b>	<b>None</b>	<b>41</b>



Two stoneware covers from jars; seven other small shards discarded.



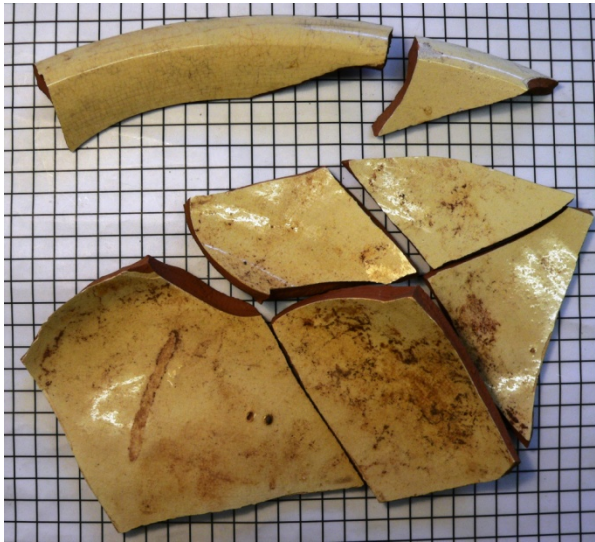
## AOC Excavations: Brunton Wire Works: Musselburgh

### Redware Dairy Bowls

(Box No 3)

(No 34) - (Project 20462) - (TR 006)

Finds No	Form	Fabric	Glazed	Base D	H	Decoration	Illus.
006	Bowl	Red/Earthenware	Yes			White Slipped	34



Seven rim, base, and body shards, 5 conjoining, from a red earthenware dairy bowl with white slipped interior.

No 35) - (Project 20462) - (TR 004)

Finds No	Form	Fabric	Glazed	Base D	H	Decoration	Illus.
013	Bowl	Red/Earthenware	Yes			White Slipped	35



One rim shard from a red earthenware dairy bowl with white slipped interior.

## AOC Excavations: Brunton Wire Works: Musselburgh

### Kiln Furniture

#### (Box No 05)

A number of shards from saggars were discarded

3 shards TR Finds No 104

5 shards TR 02 Finds No 008

4 shards TR 04 Finds No 011

7 shards TR 04 Finds No 013

#### (No 45) - (Project 20462) - (TR 04)

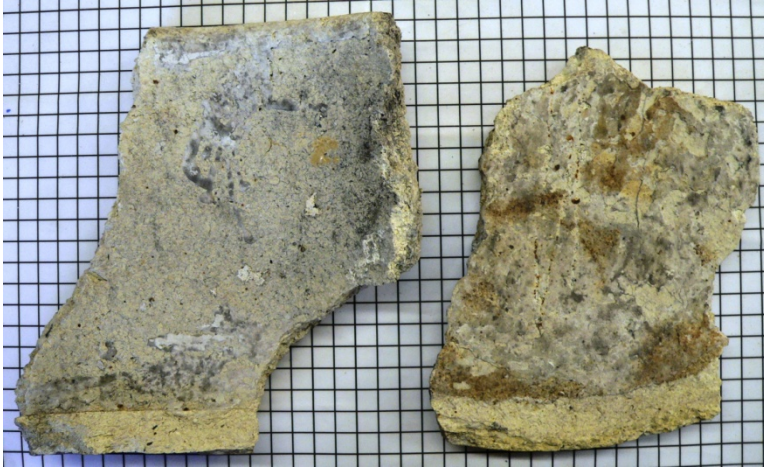
Finds No	Form	Fabric	Glazed	Dia	H	Decoration	Illus.
013	Stilts	Stoneware	No				45



Eight fragments of “three arm stilts”, all machine made kiln furniture. one example is marked with an 8. No makers’ marks, and all post c. 1845-50, when these were introduced.

#### (No 46) - (Project 20462) - (TR 02)

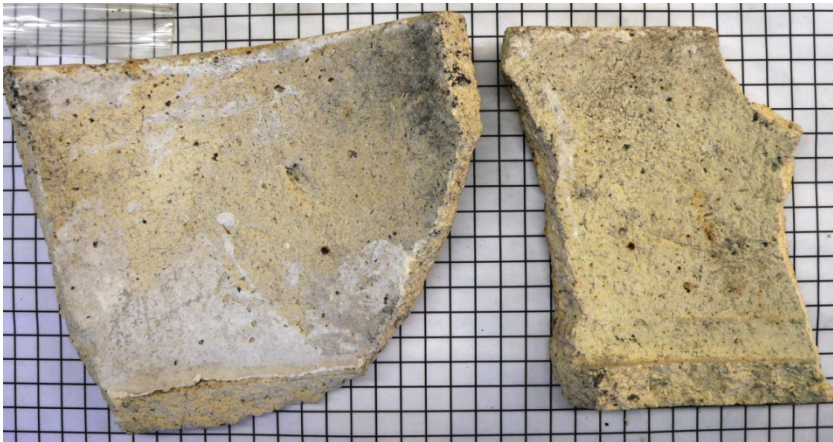
Finds No	Form	Fabric	Glazed	Dia	H	Decoration	Illus.
014	Saggars	Tempered Earthenware	No		188mm		45



Two shards from a saggar or saggars, 188 mm high and 20 mm thick

(No 47) - (Project 20462) - (TR 13)

Finds No	Form	Fabric	Glazed	Dia	H	Decoration	Illus.
001	Saggars	Tempered Earthenware	No		145mm		45



Two shards from a saggar or saggars, 145 mm high and 15 mm thick



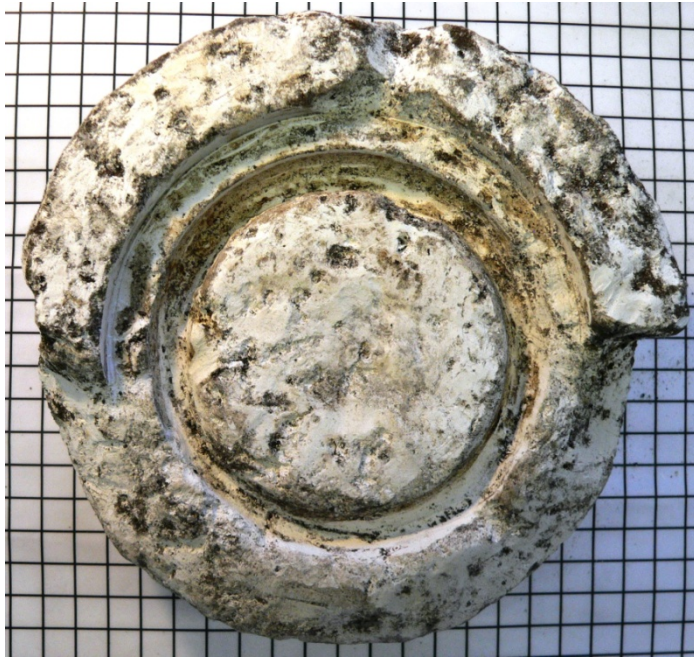
# AOC Excavations: Brunton Wire Works: Musselburgh

## Plaster of Paris Moulds

(Box No 03)

(No 32) - (Project 20462) - (TR 04)

Finds No	Form	Fabric	Glazed	Dia	H	Decoration	Illus.
013	Jar lid	Plaster of Paris				None	32



One piece of a Plaster of Paris mould, possibly for the flat lid of a jar.

(No 33) - (Project 20462) - (RT 04)

Finds No	Form	Fabric	Glazed	Dia	H	Decoration	Illus.
013	?	Plaster of Paris				None	33



One piece from an unidentifiable plaster of Paris mould.

**(No 34) - (Project 20462) - (TR 04)**

<b>Finds No</b>	<b>Form</b>	<b>Fabric</b>	<b>Glazed</b>	<b>Dia</b>	<b>H</b>	<b>Decoration</b>	<b>Illus.</b>
<b>013</b>	<b>Small Jar?</b>	<b>Plaster of Paris</b>				<b>None</b>	<b>34</b>



One piece from a plaster of Paris mould, possibly for a small jar.

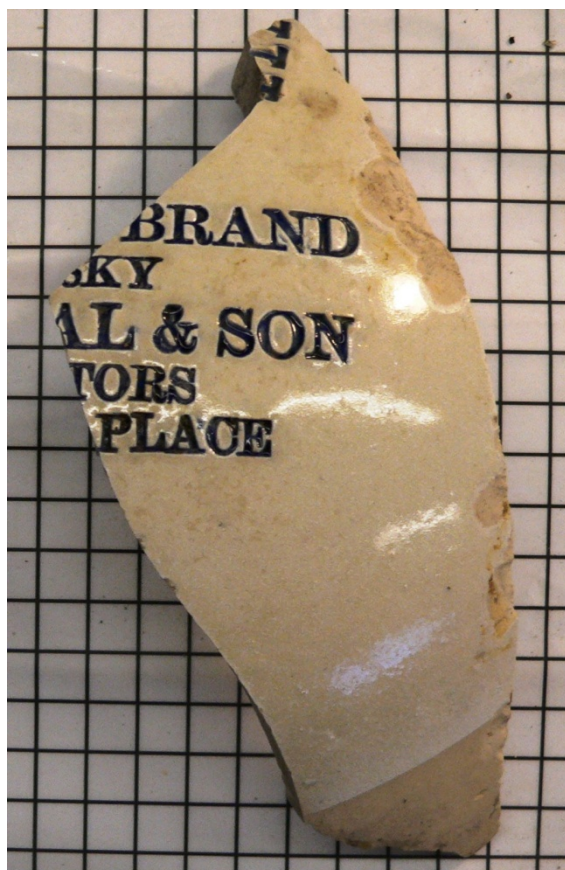
## AOC Excavations: Brunton Wire Works: Musselburgh

### Flagon

(Box No 05)

(No 48) - (Project 20462) - (TR 004)

Finds No	Form	Fabric	Glazed	Dia	H	Decoration	Illus
009	Crock	Stoneware	Y			Incised	48



One body shard from a two tone stoneware spirit flagon with part of the retailer's name and address incised and then filled with cobalt decoration.

[?] BRAND

[?] SKY

[?] AL & SON

[?] TORS

[?] PLACE



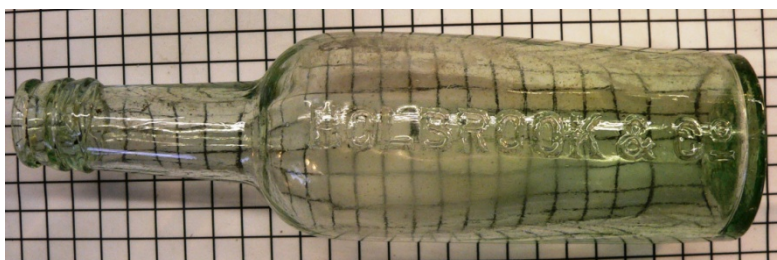
# AOC Excavations: Brunton Wire Works: Musselburgh

## Finds Various

(Boxes No 5 (49—55 & No 6 (56)

(No 49) - (Project 20462) - (TR 04 )

Finds No	Form	Fabric		Dia	H	Decoration	Illus
009	Bottle	Glass		56mm	220mm	Moulded Lettering	49



One clear glass bottle  
moulded with  
**HOLBROOK & Co.** A  
Worcestershire Sauce Bottle  
c. 1895 -?

The firm Goodall, Backhouse was established in 1837, in Leeds, as Bell and Brooke, producing a range of products, including baking powder, mushroom ketchup, ginger beer powder, and what the company described as its “celebrated Yorkshire Relish”.

The success achieved by the company in building up the brand name meant that in the 1890s the company was prepared to take a rival sauce manufacturer to court to protect its brand name. **Holbrook and Co** had begun production of a sauce that they also called “Yorkshire Relish”, but this was not to last, as the House of Lords finally ruled that only Goodall, Backhouse was entitled to use the term “Yorkshire Relish”.

(No 50) - (Project 20462) - (Context ?)

Finds No	Form	Fabric		Dia	H	Decoration	Illus
016	Bottle	Glass		48mm	192mm	Moulded Lettering	50



One clear glass bottle  
moulded with

**RELISH TIT BITS  
HARROGATE /  
REGISTERED**

**TRADE MARK No 42813 /STAMP BOINTON JUN & CO**

(No 51) - (Project 20462) - (Context ?)

Finds No	Form	Fabric		Breadth	H	Decoration	Illus
103	Bottles	Glass		83mm	?	None	51

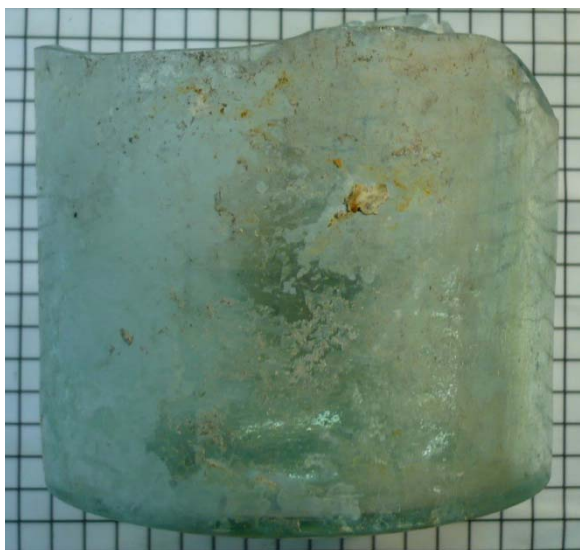


Shards from a minimum of two square moulded bottles with defined shoulders and wide mouths. It has **(1088 C. S & Co)** moulded on one of the bases.

C.S. & Co. Ltd  
(Cannington Shaw & Co. Limited, St. Helens, Lancashire, England (1875-1913)

(No 52) - (Project 20462) - (Context ?)

Finds No	Form	Fabric		Dia	H	Decoration	Illus
102	Bottle	Glass		123mm	?	None	52



One fragment from the base of a large round bottle with **467 C. S & Co** moulded on the base.

C.S. & Co. Ltd (Cannington Shaw & Co. Limited, St. Helens, Lancashire, England (1875-1913)



(No 53)- (Project 20462) - (TR 12)

Finds No	Form	Fabric		Length	Width	Decoration	Illus
005	Plaque	Brass		123mm	100mm	Moulded lettering	53



One brass plaque cast with **THE / ROBOT STOKER / NO 2521 / RILEY STOKER Co Ltd / LONDON**. The plaque was recovered from a piece of machinery associated with structure [1201]. This came from a mechanical stoker, a device which automatically fed coal in to a steam boiler.

The stoker was developed and produced from 1911 onwards:

([www.wpi.edu/Academics/Library/Archives/Riley](http://www.wpi.edu/Academics/Library/Archives/Riley))

(No 54) - (Project 20462) - (Context ?)

Finds No	Form	Fabric		Dia		Decoration	Illus
017	Ball	Wood		105mm	?	Lath cutting	54



One sawn - off wooden newel post with traces of varnish and two incised lathe cut bands.

(No 55) - (Project 20462) - ( )

Finds No	Form	Fabric		Dia	Height	Decoration	Illus
	Pipe	Clay		20mm		Yes	55



Two conjoining shards from a clay pipe bowl marked  
**MAKENZIE / SE?????ill / EDIN**



(No 56) - (Project 20462) - (From Structure 901) AOC Evaluation

Finds No	Form	Fabric	Length	Breadth	Height	Decoration	Illus
	Brick	Fire Clay	225mm	225mm	80mm	Yes	56



Two large moulded  
fire bricks impressed  
with **STEVENSONS  
PATENT / SOLE  
MAKERS /  
GIBBONS BROS  
Ltd / DUDLY.**

One brick discarded.